



INDIVIPRO

X

JANTAMINIAU

CARPETS & RUGS

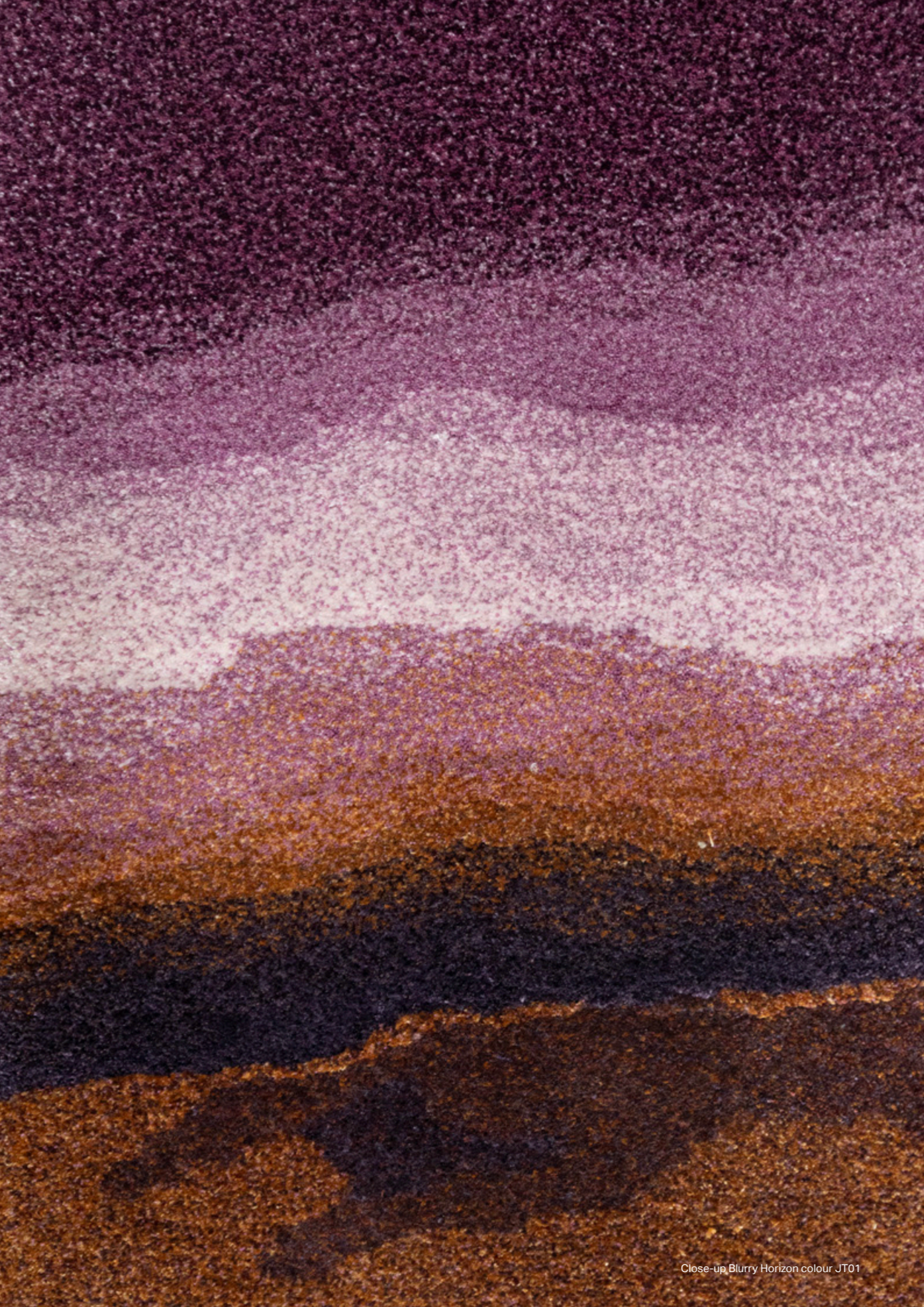


Blurry Horizon colour JT01 - Showroom Jan Taminau, Madrid

SPECIFICATIONS / MANUAL

**BLURRY HORIZON** BY JAN TAMINIAU - JT08





Close-up Blurry Horizon colour JT01



INDIVIPRO

CARPETS & RUGS

X

JANTAMINIAU

## THE INSPIRATION FOR BLURRY HORIZON

"The inspiration for this carpet lies in my childhood fascination with stains - how they form and then fade from intense to faint shades. I marvelled at a drop of water slowly spreading from intense to subtle, or the ink from my fountain pen gradually flowing from intense to vague as I doodled at school. In my mind, these occurrences often conjured up landscapes with horizons, fantasy worlds. In fact, I've devoted my whole career to playing with this concept, striving to replicate the behaviour of stain formations.

In this Blurry Horizon carpet, the flow of colours is vividly evident. One pigment displaces the other, reminiscent of the marbling technique we use in crafting dresses, akin to those seen on book covers."

"For this carpet, we aimed to recreate this effect. Through extensive experimentation, we discovered that a mixture of different yarns yielded the desired outcome. The organic shape further enhances the illusion of stains, giving the impression that colours seamlessly blend into each other when the carpet adorns the floor. I am immensely proud and delighted with the result, and it leaves me yearning for more opportunities to further explore this artistic endeavour."



## COLLABORATION WITH INDIVIPRO

"While I dreamt about creating dresses as a child, interior design had my interest too. And I've always wanted to create carpets. But until now, I never had the time or the opportunity to pursue that avenue. So when Indivipro invited me for this collaboration, it was an immediate yes for me. It seemed fun, even exhilarating. From there, I set out on my creative journey. By combining my embroidery techniques, painting skills, and weaving art, I tried to stay as true to myself as possible. Blending the materials in a unique way and giving it the highest possible softness, I am incredibly proud of this carpet. Its interwoven organic shapes and intricate play of 32 colours create an intense and radiant display. I am really proud that we were able to do this together, and that these carpets are now ready. I'd love to know what they will look like in customers' homes, and how people will experience them. To me, it is important that they evoke a sense of fullness and richness. The biggest compliment to me would be that people find their carpet "huggable," that they'd want to cuddle it, lie on it. Visually, too, the carpets are very appealing, making them an enrichment of people's homes and home experience."

Jan Taminiau





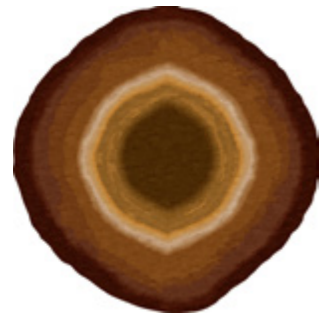
ARTWORK JT08

JANTAMINIAU

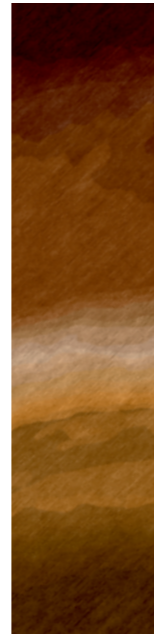
A unique design and carpet collection available in 10 colour variations  
The design is proportionally scalable. **The standard minimum size is 250x250 cm.**  
Smaller sizes maybe considered upon consultation. **Minimum order quantity is 4m<sup>2</sup>.**

ARTWORK ORGANIC SHAPE

Artwork size as shown is 350x350cm

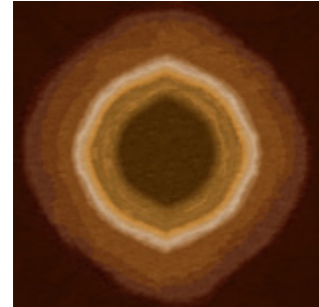


The sample is a detail of the entire artwork. Sample size is 30 x 120 cm



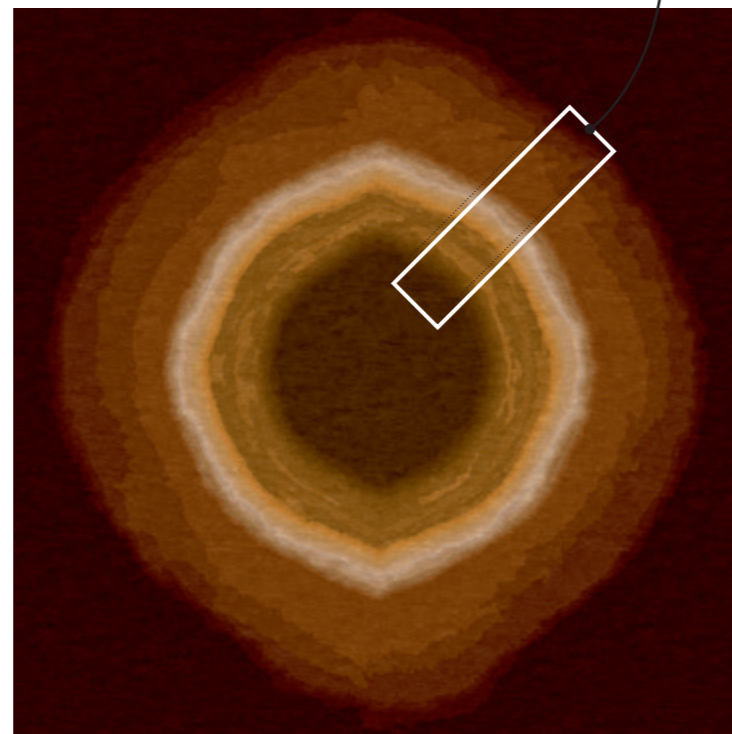
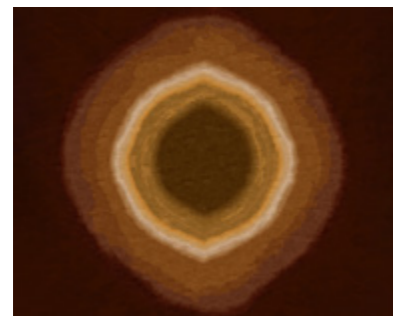
ARTWORK SQUARE

Artwork size as shown is 350x350cm



ARTWORK RECTANGLE

Artwork size as shown is 480x350cm



ATTENTION

Please be aware of the fact that the artwork is only a colour and graphic reference. No rights can be derived with regard to the representation of actual colours and details. These may deviate from reality due to image processing and printing. **For each size artwork approval is required.**  
**Concerning samples:** in textile industry, there is never the exact same color in different dyeing lots. On lighter colors, the difference is even more present, attending to the usual color deviation that we have a tolerance pf acceptance until 5%. On the samples for the picture attached, one of the samples looks like the colors are stronger, however, the possible color deviation is acceptable. Further that, this difference can be due to a lot of different factors, like, one of the samples is older, with more use, more exposition to light and also more "dirt" because of the touching and the possible dust. All these factors can make the difference between the 2 samples.





## PRODUCT SPECIFICATIONS

### MATERIAL

The BLURRY HORIZON is a hand-tufted carpet, available in a mix of Bamboo, Tencel and Thin Wool. When using natural materials, texture and colour may vary slightly, this is perfectly normal.

### COLOUR

The natural quality lends each carpet a unique colour. Colour intensity may vary depending on the dye bath. Avoid direct sunlight at all times. Longer exposure to sunlight will cause damage and fading.

### COLOUR FASTNESS TO LIGHT

4 - 5

### COLOUR FASTNESS TO WATER

5

### DIMENSION VARIATIONS

Dimensions may vary up to 3%. Your rug may stretch lightly. This is fully normal.

### FIRE CLASSIFICATION

Fire classification - CfI-s1.

### PRIMARY BACKING

100% Polyester

### SECONDARY BACKING

100% Polyester

### PILE WEIGHT (KG/M<sup>2</sup>)

4,5

### TOTAL WEIGHT (KG/M<sup>2</sup>)

5

### ANTI-SLIP

Anti-slip is available separately in two fixed dimensions, as a roll for installation, or cut to size for this particular carpet.

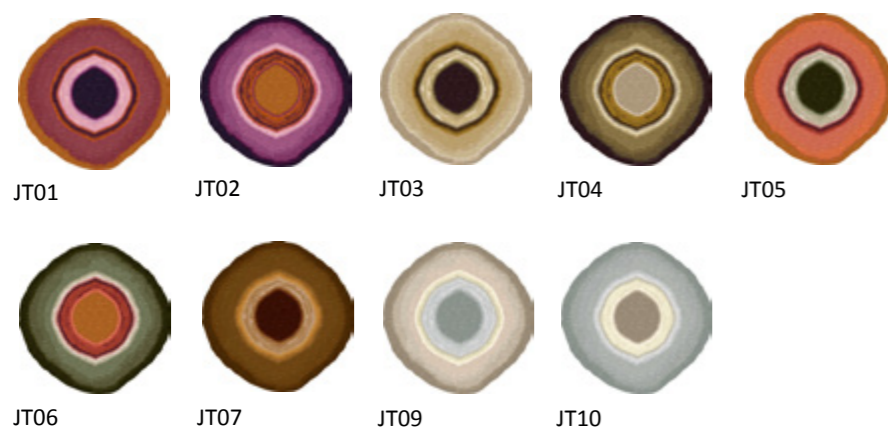
### EXTRA INFORMATION

Do not store this carpet in rolled-up form for longer than 3-4 weeks

### WARRANTY

Please refer to our regular terms.

### OTHER COLOURS AVAILABLE



### ESSENTIAL PRODUCT ID

The product ID number which you can find on the label on the back of each sample or carpet allows us to access all production details, such as colors, pile heights, density, dye parts, and management details. It is crucial for ensuring consistency. This ID is essential for replicating production parameters, especially for approved samples. In short, the ID number ensures that all aspects of production are consistently maintained and reproduced as required. **When you provide this product ID code by ordering, we consider all details unless specified otherwise.**

## CARPET MAINTENANCE



### NATURAL FIBERS AND COLOR VARIATIONS

Bamboo, Tencel, and thin wool fibres are natural products. As with all natural products, slight deviations in texture and colour may occur between dye lots. If an exact colour match is required, please inform our customer service department. We can then send a cutting from actual production for customer approval prior to shipment.

### SPECIFIC CHARACTERISTICS OF TENCEL FIBERS

Tencel fibres have some unique features. One of them is the varying colour effect that it presents, especially in plain rugs. Along the surface of the rug, slight variations in colour may occur (similar to what happens with velvet), which gives a differing effect that becomes more evident in lighter rugs. This is not a defect; it is simply a characteristic of these cellulosic raw materials.

### PILLING AND REGULAR MAINTENANCE

During the first few months, it is normal for pilling to occur. This is not a manufacturing defect; it is another common characteristic of this type of fibre. The amount of pilling will start to diminish after several weeks of use and does not affect the rug's durability, appearance, or quality. Regular vacuuming not only cleans the rug, but also helps to recover the pile and improve the rug's quality. It is not advisable to use central vacuum systems or low-power vacuums.

### VACUUMING AND ROTATING THE CARPET

It is important to vacuum your rug frequently, both to clean it and to help recover the pile, which might show some height differences due to heavy foot traffic and wear. It is also important to regularly rotate the rug so that the effects of light and normal wear are evenly distributed across the entire surface. When furniture is placed on the rug, using a rug protector can help prevent damage to the pile and maintain the overall appearance of the product.

### CLEANING RECOMMENDATIONS

Regular cleaning is essential to maintain the appearance of your rug. Use a high-quality vacuum cleaner with a power rating of 2000W and vacuum in the direction of the pile. All rugs should be cleaned regularly, with lighter-coloured rugs requiring more frequent cleaning than darker ones. Steam cleaning or any other methods that involve a substantial increase in temperature are not recommended. For rugs with Bamboo or Tencel in their composition, it is highly recommended to use a professional injection-extraction method with low temperatures and low pressure. For deeper cleaning, please reach out to a specialised rug cleaning company.

No rights can be derived from this manual with regard to the representation of colours. These may deviate from reality due to image processing and printing. The entire content of this manual is subject to printing and typographical errors.





# INDIVIPRO

---

CARPETS & RUGS

X

# JANTAMINIAU

Vonderweg 39, 7468 DC Enter, The Netherlands | [info@indivipro.com](mailto:info@indivipro.com) | +31(0) 88 500 1500

**INDIVIPRO.COM**

Calle Lagasca 90, 28006 Madrid, Spain | [atelier@jantaminiau.com](mailto:atelier@jantaminiau.com) | +34 659 88 64 12

**JANTAMINIAU.COM**